

## Type 2100

### DATA SHEET

#### Description

The 2100 series governor has been developed to meet the requirements of engines in the power range 200 to 2000 H.P. (150 to 1500 kW).

The design incorporates many of the main control components of the well proven 1100 governor series.

The governor is of the centrifugal flyweight type with a hydraulic servo mechanism to provide the output effort. It is totally self-contained with its own oil reservoir, oil pump hydraulic accumulators and pressure control.

Provisions exist to connect an air operated starting booster.



#### Features

All models are available with fuel limiting, with respect to charge air pressure or via a manual control knob.

8 or 12 ft lbf (11 or 16 joules) work output within the same external dimensions

Drive speed, drive shaft and base mounting is common to all models and is interchangeable with many UG based governors and actuators

#### Models available

- ➔ 2101 LEVER SPEED SETTING
- ➔ 2102 ELECTRIC MOTOR SPEED SETTING
- ➔ 2103 DIAL SPEED SETTING
- ➔ 2104 PNEUMATIC SPEED SETTING

Nominal stalled work capacity	8 ft lbf (11 J)	12 ft lbf (16 J)
Output shaft torque increase fuel	11.4 lbf ft (15.4 Nm)	17.21 lbf ft (23.4 Nm)
Sevo oil pressure	165 lbf/in <sup>2</sup> (11.4 bar)	250 lbf/in <sup>2</sup> (17.2 bar)

## Specification

## Dimensions

### Weight

Lever speed setting model 38 lbs (17.2 kg)

### Rotation

Either clockwise or counter clockwise

### Drive shaft dimensions

0.625 in. nominal diameter 36 SAE serrations  
or alternatively 0.625 diameter keyed

### Output shaft dimensions

0.5 in. nominal diameter 36 SAE serrations

### Speed droop

External adjustment (lockable) 0 - 10 %

### Oil supply

Self contained 1.7 litres

### Speed setting motor (2102)

Operating voltages

- 24 volts DC 3 wire
- 110/120 volts DC
- 110/120 volts AC single phase  
(50/60 Hz 3 wire)
- Other voltages can be supplied

### Shutdown solenoid

(Energised to stop)

- 24 volts DC
- Lever shutdown available

### Pneumatic speed setting (2104)

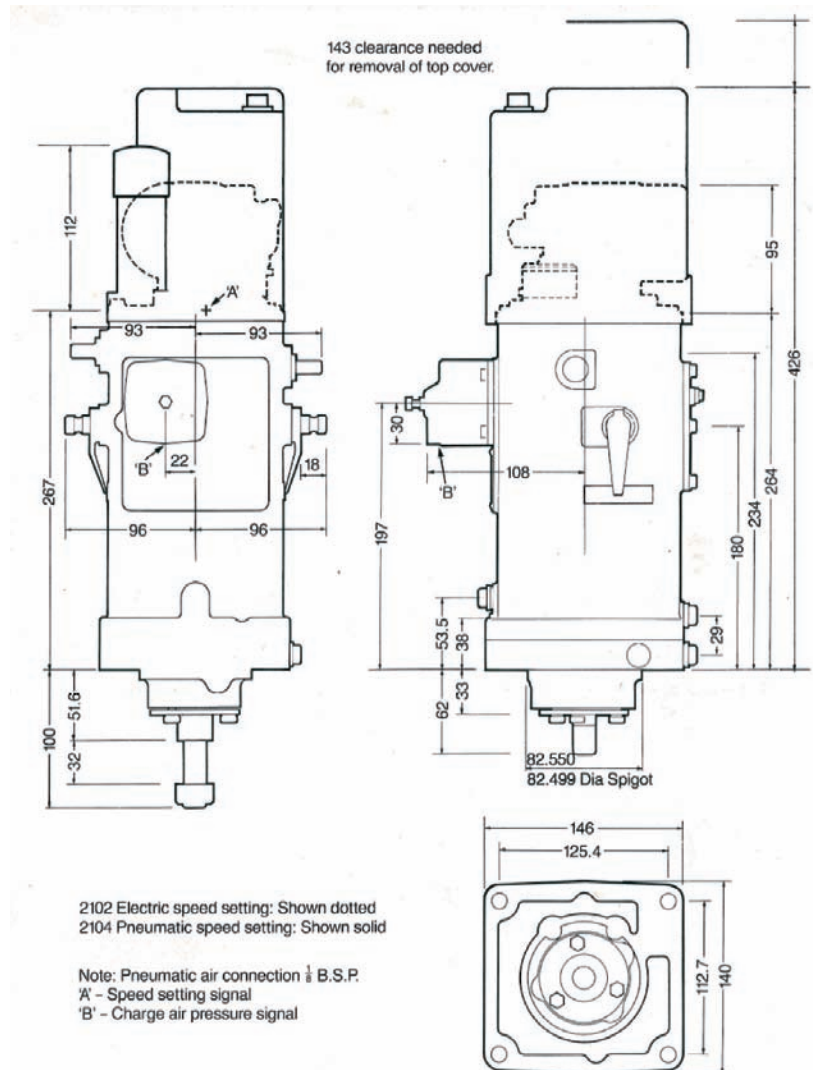
- 3-15 lbf/in<sup>2</sup> (0.21 - 1.05 bar)
- 10-60 lbf/in<sup>2</sup> (0.7 - 4.2 bar)
- 5-45 lbf/in<sup>2</sup> (0.35 - 3.16 bar)
- 5-90 lbf/in<sup>2</sup> (0.35 - 6.32 bar)

### Speed range

300 to 1800 rpm for variable speed applications  
1200 to 1600 (at rated engine speed) for constant speed

### Output shaft movement

40° (max) 0 - 10 on scale  
24° no-load to full load 2 - 8 on scale



Subject to alterations. ©REGULATEURS EUROPA, Ltd., 2011

### REGULATEURS EUROPA Ltd.

Port Lane, Colchester, Essex CO1 2NX  
United Kingdom  
Phone: +44 (0)1206 799 556  
Fax: +44 (0)1206 792 685  
Email: sales@regulateurseuropa.com



### REGULATEURS EUROPA BV

Ekkelkamp 3, 9301 ZZ Roden  
The Netherlands  
Phone: +31 (0)5050 19888  
Fax: +31 (0)5050 13618  
Email: sales@regulateurs-europa.com